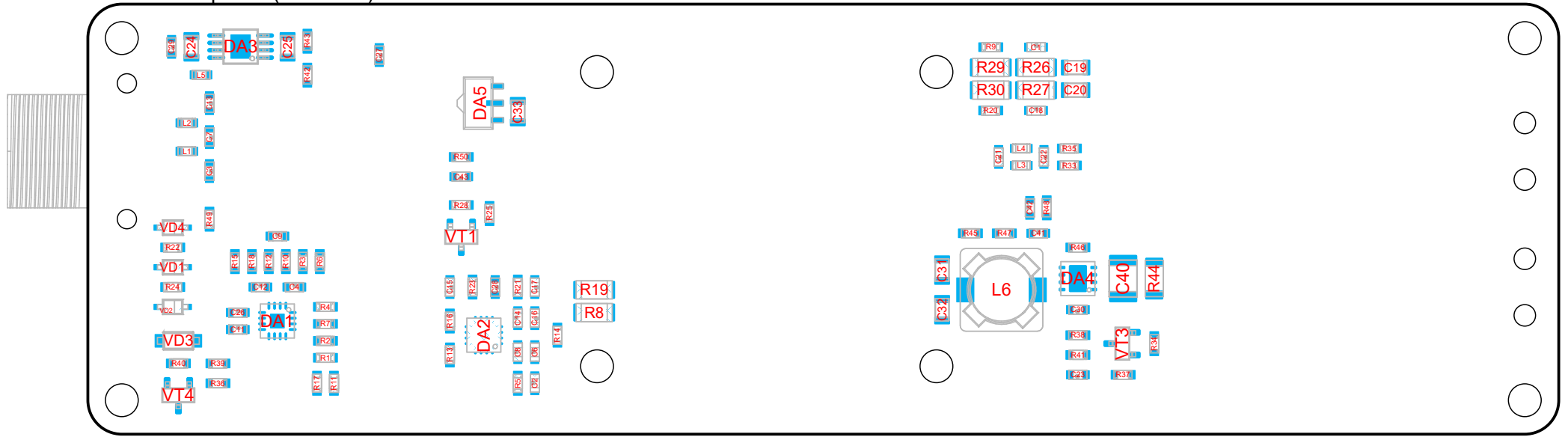
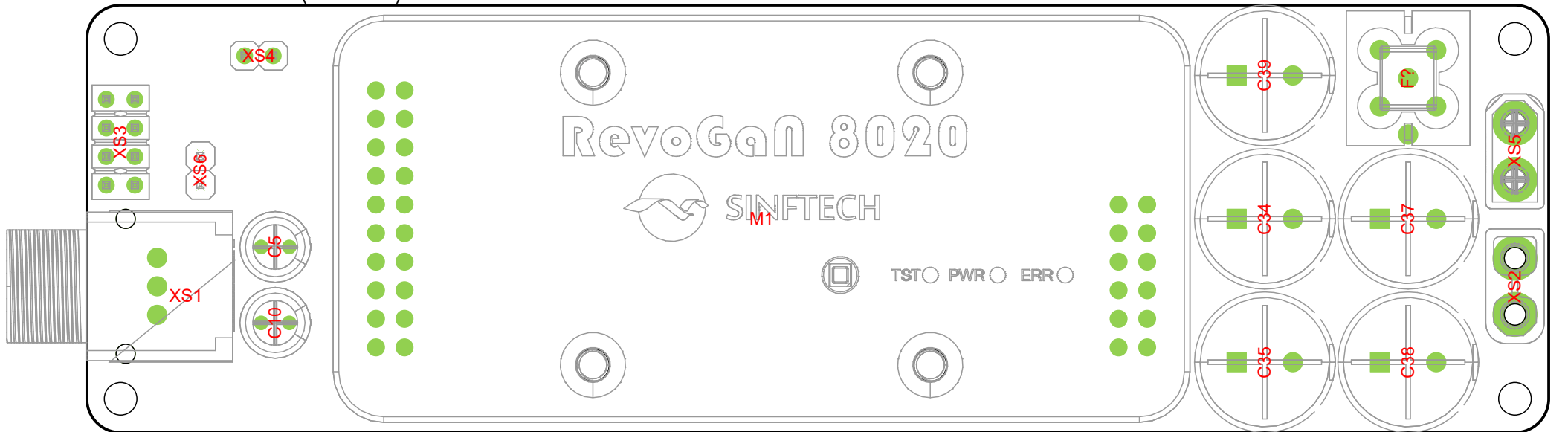


View from Top side (Scale 2:1)



View from Bottom side (Scale 2:1)



Bill Of Materials

Line #	Designator	Quantity	Value	Description	Digikey #
1	C3, C13, C41	3	100pF	SMD Cap 100pF 1% 50 C0G	
2	C4, C12	2	330pF	SMD Cap 330pF 1% 50 C0G	
3	C5, C10	2	22uF	22µF 25V Aluminum Electrolytic Capacitors Radial, Can 1000 Hrs @ 85°C	UES1E220MEM-ND
4	C7, C9, C42	3	1nF	SMD Cap 1nF 1% 50 C0G	
5	C11, C23, C26, C27, C28, C29, C30, C43	8	10nF	SMD Cap 10nF 5% 50 X7R	
6	C24, C25, C31, C32, C33	5	22uF	22µF ±20% 25V Ceramic Capacitor X5R 0805 (2012 Metric)	490-10749-1-ND
7	C34, C35, C37, C38, C39	5	150uF	150µF 100V Aluminum Electrolytic Capacitors Radial, Can 10000 Hrs @ 105°C	PCE5231-ND
8	C40	1	10uF	10µF ±10% 100V Ceramic Capacitor X7S 1210 (3225 Metric)	490-16266-1-ND
9	DA1	1	ADA4945-1	ADC Driver IC Data Acquisition 16-LFCSP (3x3)	ADA4945-1ACPZ-R2CT-ND
10	DA3	1	TPS7A4901	Linear Voltage Regulator IC 1 Output 150mA 8-MSOP-PowerPad	296-27751-1-ND
11	DA4	1	TPS54061	Buck Switching Regulator IC Positive Adjustable 0.8V 1 Output 200mA 8-VDFN Exposed Pad	296-39413-1-ND
12	DA5	1	78L33	Linear Voltage Regulator IC Positive Fixed 1 Output 100mA SOT-89-3	497-7286-1-ND
13	F1	1	BNX005	LC EMI Filter 5th Order Low Pass 2 Channel 15A Block, 4 Lead	490-18608-ND
14	L1, L2, L5	3	120Z	120 Ohm Ferrite Bead 0603 (1608 Metric) 2A 50mOhm	490-7815-1-ND
15	L6	1	150uH	150µH Shielded Inductor 460mA 880mOhm Max Nonstandard	308-1506-1-ND
16	M1	1		GaN based Power Amplifier, 80V 20A	
17	R2, R7	2	0	SMD Res 0 1% 0,1W 0603	
18	R3, R18	2	10K 0.1%	Precision chip resistor 0603 1/8 Wt	
19	R6, R15	2	4.99K 0.1%	Precision chip resistor 0603 1/8 Wt	
20	R10, R12	2	2.49K 0.1%	Precision chip resistor 0603 1/8 Wt	
21	R34, R36, R37, R38, R40, R45, R48	7	130K	SMD Res 130K 1% 0,1W 0603	
22	R39, R46	2	56K	SMD Res 56K 1% 0,1W 0603	
23	R41, R42, R50	3	8.2K	SMD Res 8.2K 1% 0,1W 0603	
24	R43	1	1.1K	SMD Res 1.1K 1% 0,1W 0603	
25	R44	1	4.7	4.7 Ohm ±1% 0.5W, 1/2W Chip Resistor 1206 (3216 Metric) Automotive AEC-Q200, Current Sense Thick Film	P17616CT-ND
26	R47	1	10K	SMD Res 10K 1% 0,1W 0603	
27	VD3	1	MMSZ4697T1G	Zener Diode 10V 500mW ±5% Surface Mount SOD-123	MMSZ4697T1GOSCT-ND
28	VT3	1	MMBT5401	PNP Bipolar (BJT) Transistor 150V 500mA 300MHz 300mW Surface Mount SOT-23-3 (TO-236)	MMBT5401LT1GOSCT-ND
29	VT4	1	MMBT5551	NPN Bipolar (BJT) Transistor 160V 600mA 300MHz 300mW Surface Mount SOT-23-3 (TO-236)	MMBT5551LT1GOSCT-ND
30	XS1	1	TRAPC3MX		TRAPC3MX-ND
31	XS2	1			
32	XS3	1	HEADER 2x4		
33	XS4	1	JMP		WM16232-ND
34	XS5	1			